

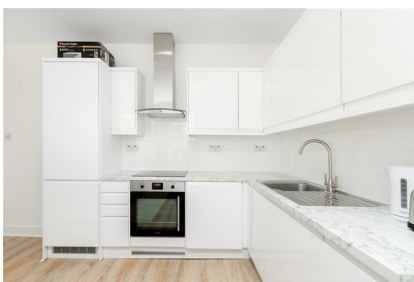
# Parkheath

*Sold on Service*

---

## **Greencroft Gardens NW6**

**£2,600 PCM (£600 per week) - Camden Band D**



Bright and spacious 2 bedroom, 2 bathroom apartment

Reception with open plan kitchen

Second smaller double bedroom

Wood flooring in the reception and hallway

Located in the desirable South Hampstead conservation area

West Hampstead Office 020 7794 7111

Set on the 2nd floor of an attractive period conversion

Main bedroom with ensuite bathroom

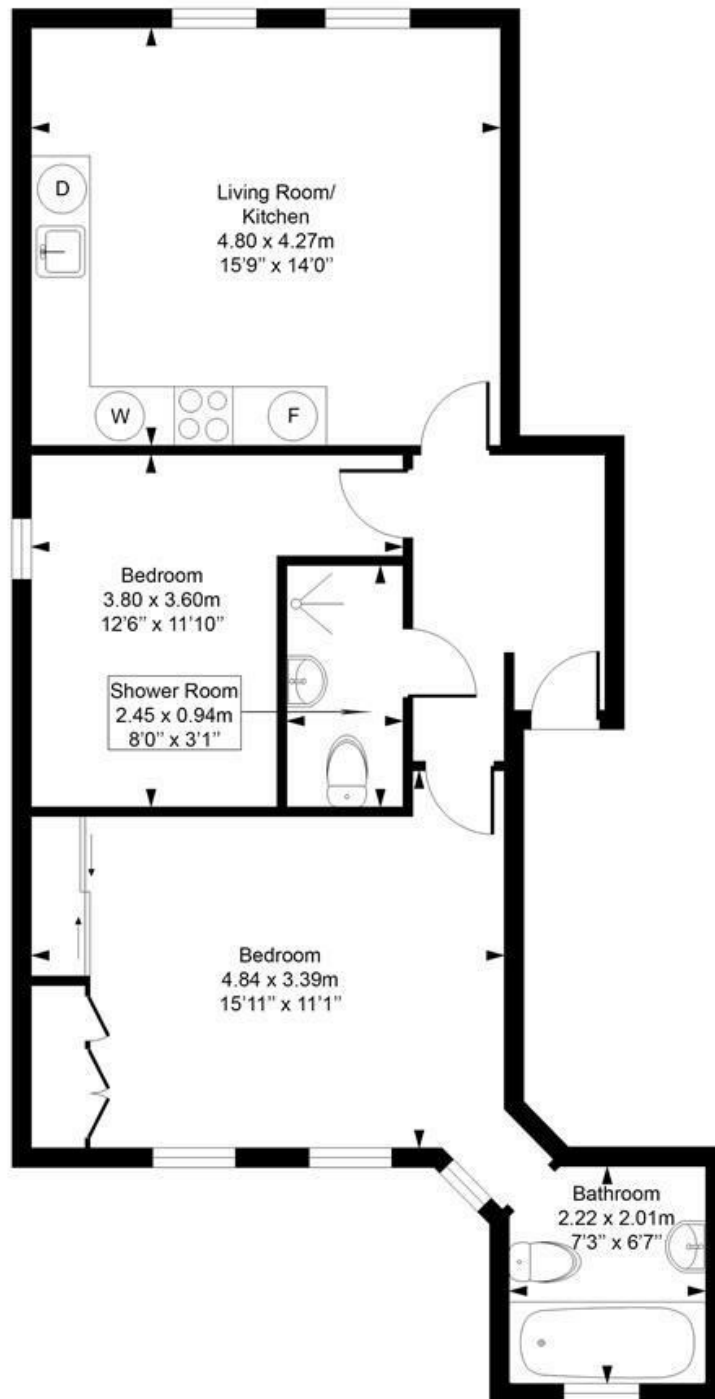
Additional shower room

Fitted carpets in both bedrooms

EPC: Rating C, Council Tax: Camden Band D

## Greencroft Gardens

Approximate Gross Internal Area = 62.8 Sq m / 676 sq ft



Measured in accordance with RICS guidelines. Every attempt is made to ensure accuracy

However all measurements are approximate.

The floor plan is illustrative purposes only and is not to scale

ELLIE CLAIRE PHOTOGRAPHY LTD

[www.ellieclairephotography.com](http://www.ellieclairephotography.com)

The particulars do not constitute part of an offer or contract. The particulars, including text, photographs and plans, are for the guidance only of prospective purchasers/tenants and must not be relied upon as statements of fact. The descriptions provided therein represent the opinion of the author and whilst given in good faith should not be construed as statements of fact. Nothing in these particulars shall be deemed a statement that the property is in good condition or otherwise or that any services or facilities are in good working order. All measurements are approximate